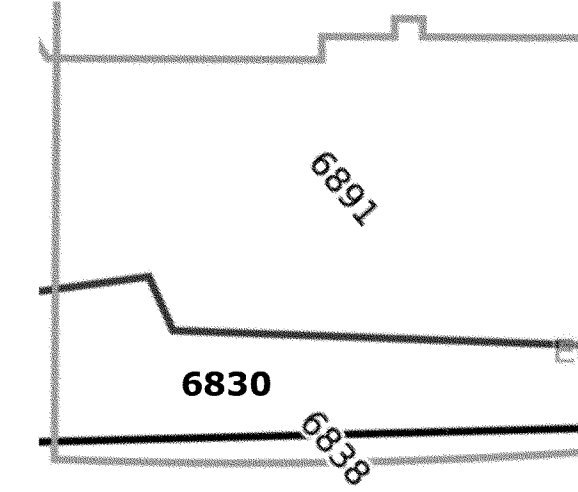
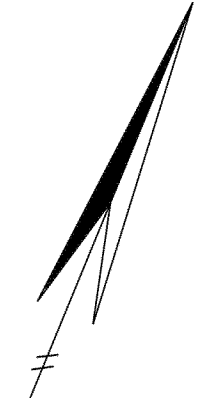


APPARTEMENTSTEKENING NOUVEAU ZWIJNDRECHT

SCHAAL 1 : 200

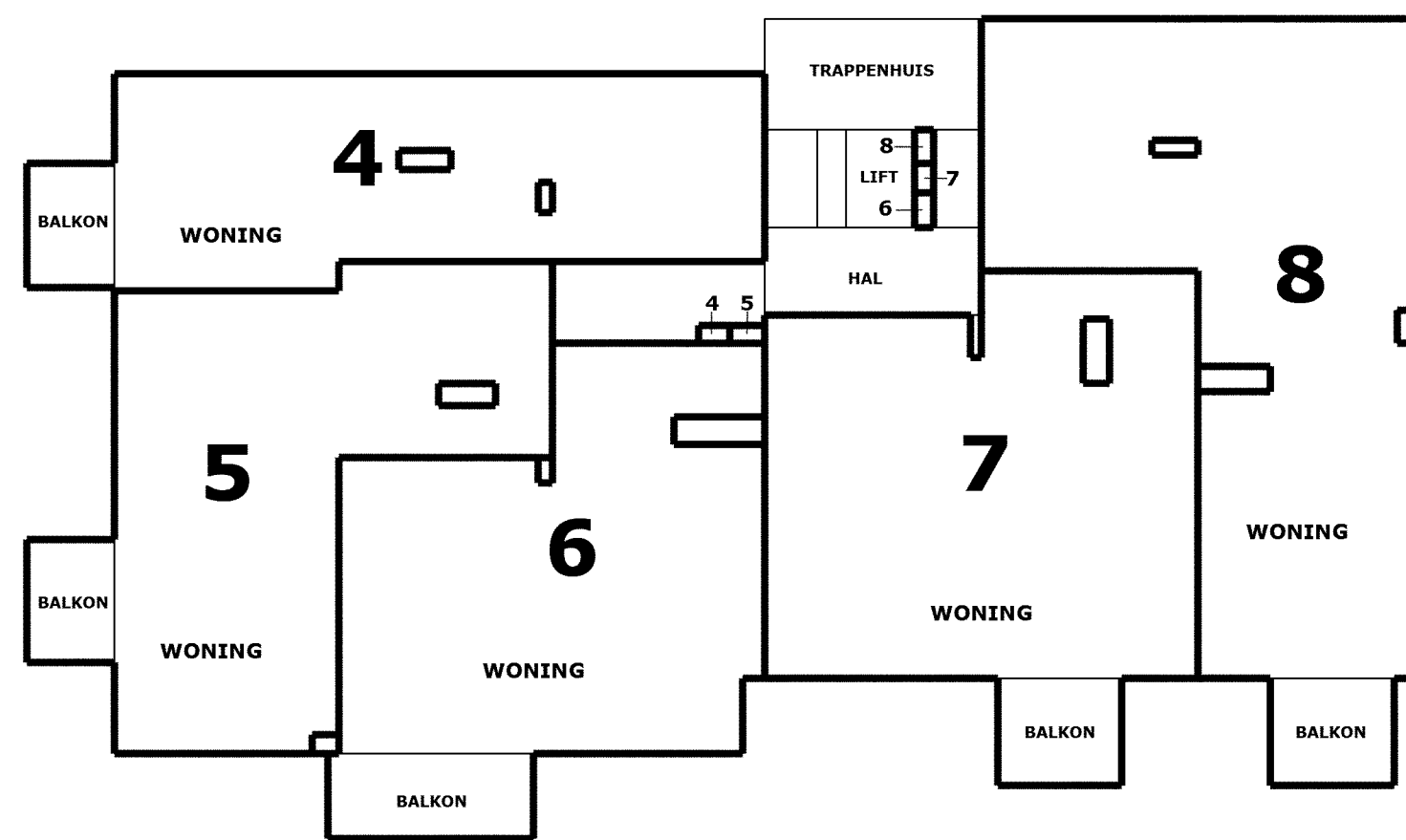


Voorgenomen splitsing in 40
appartementenrechten van de
kadastrale percelen gemeente
ZWIJNDRECHT sectie B nrs. 6830-6838-6891

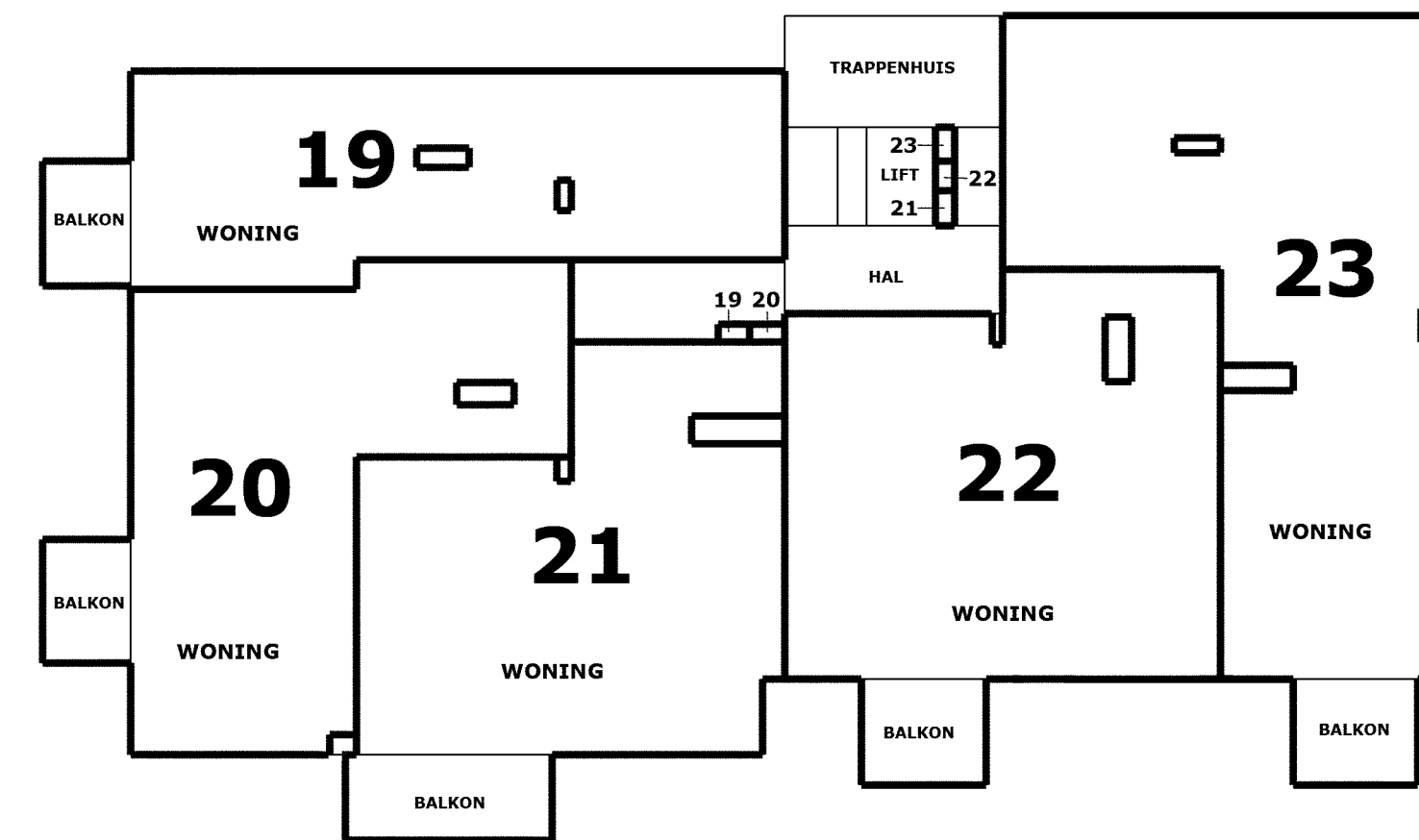
KADASTRALE SITUATIE

Gemeente : ZWIJNDRECHT
Sectie : B
Nrs. : 6830-6838-6891

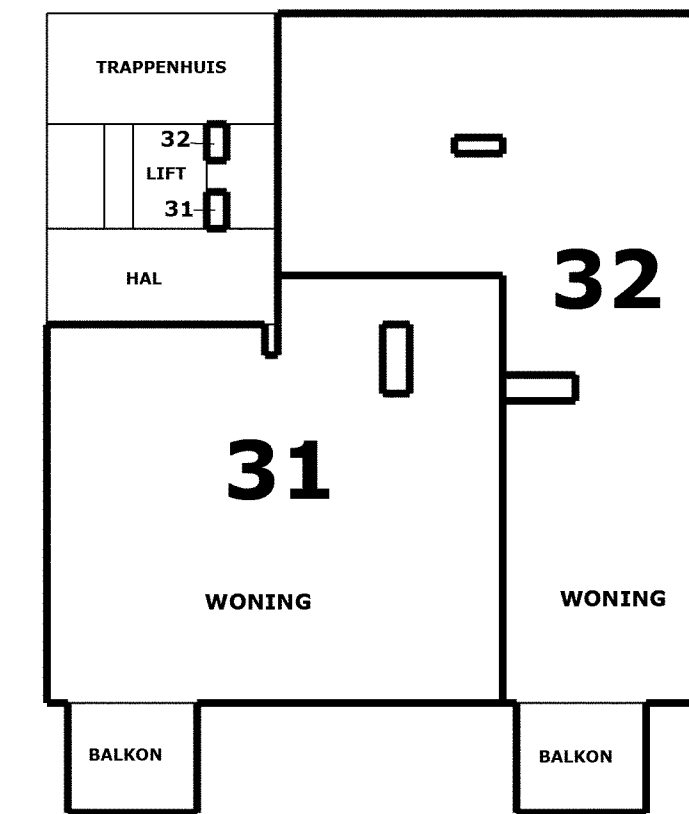
schaal 1 : 500



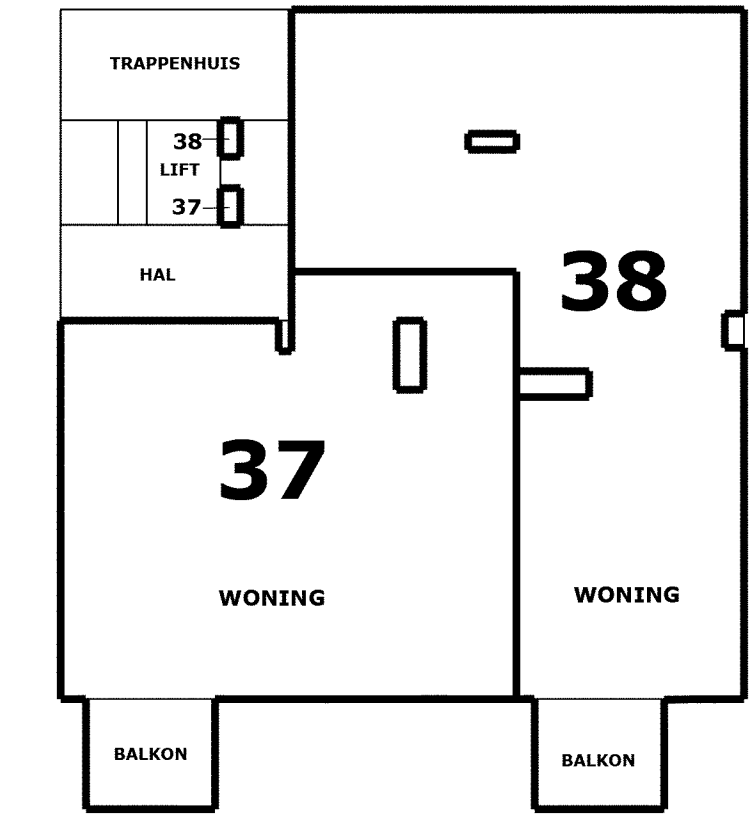
1e verdieping



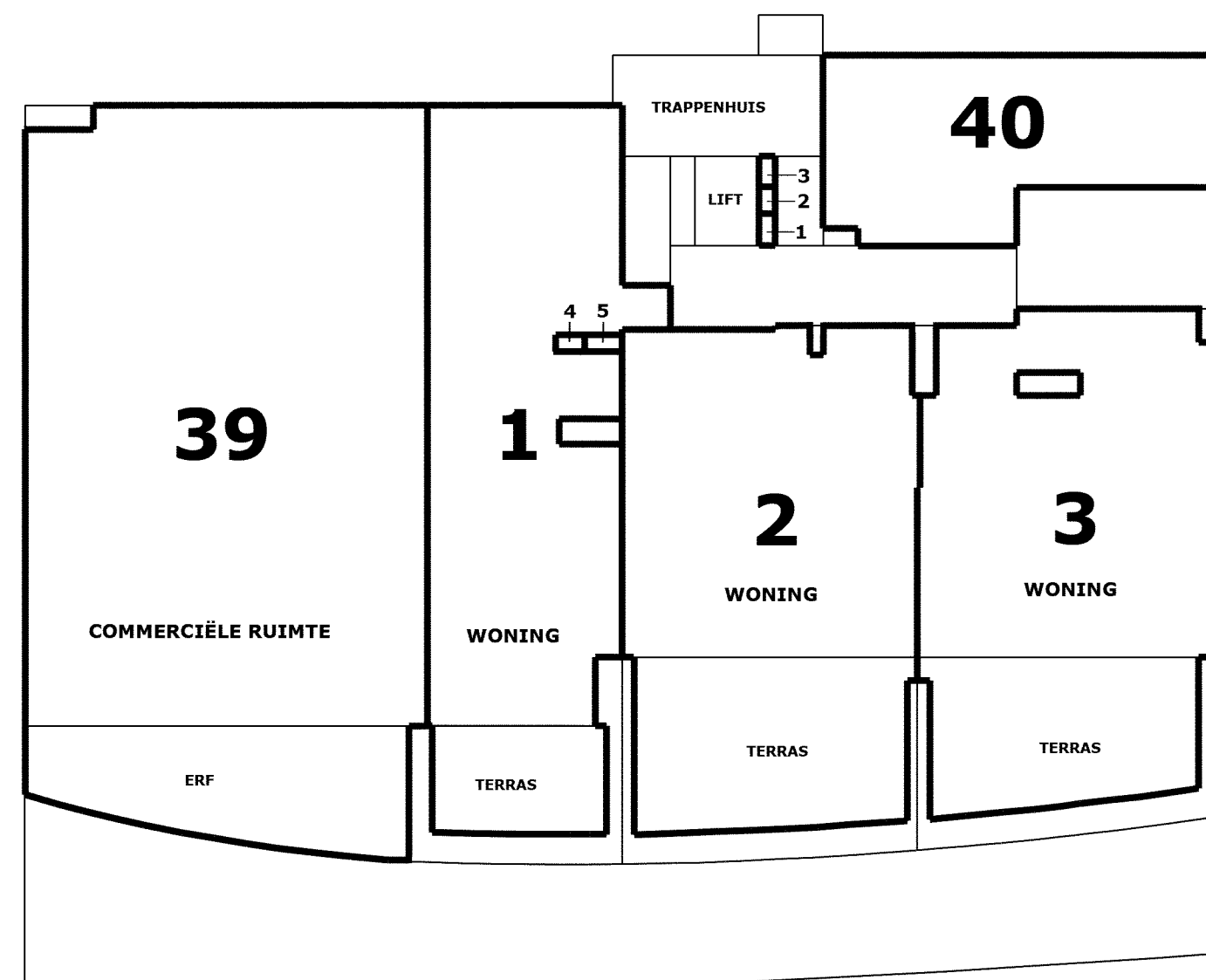
4e verdieping



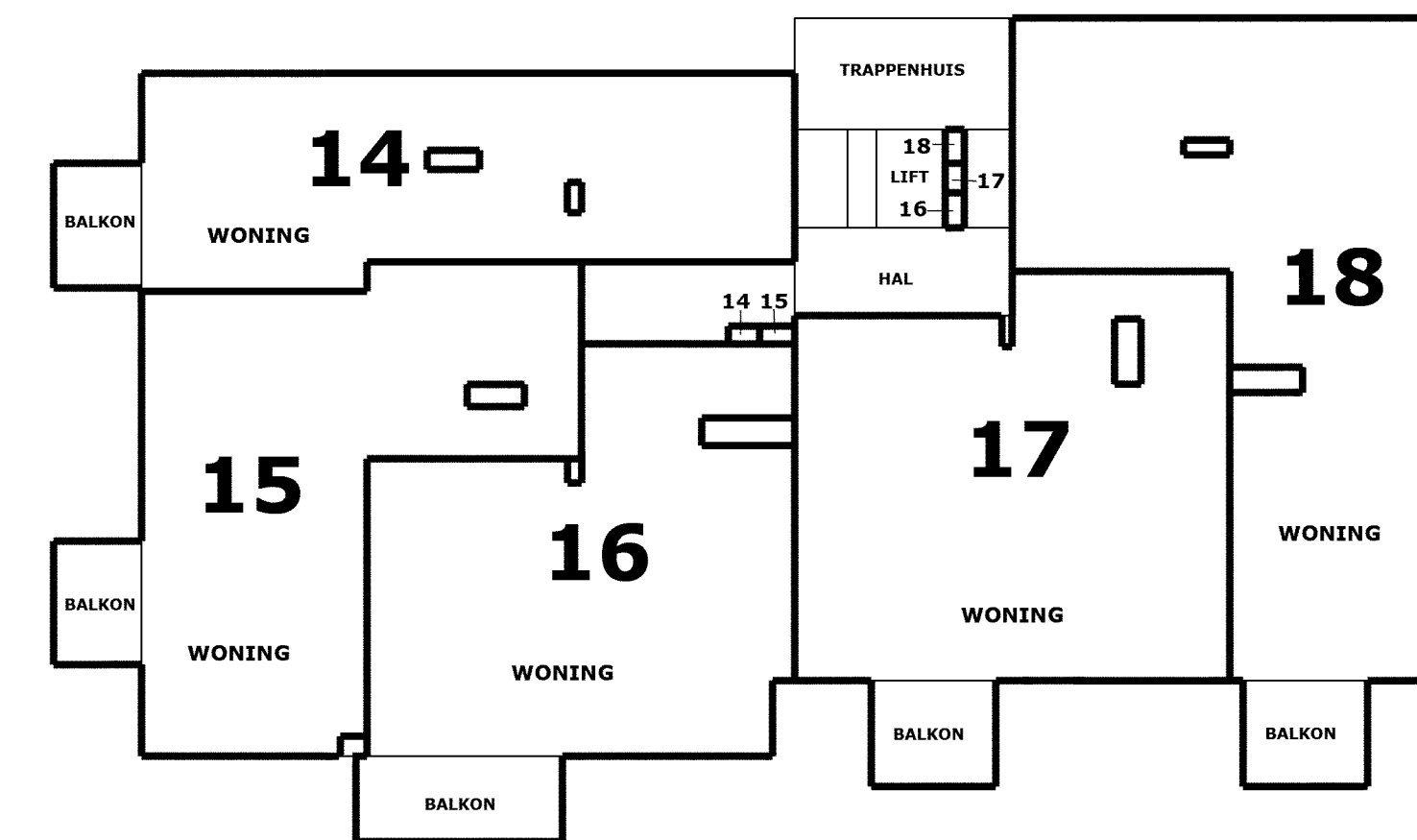
7e verdieping



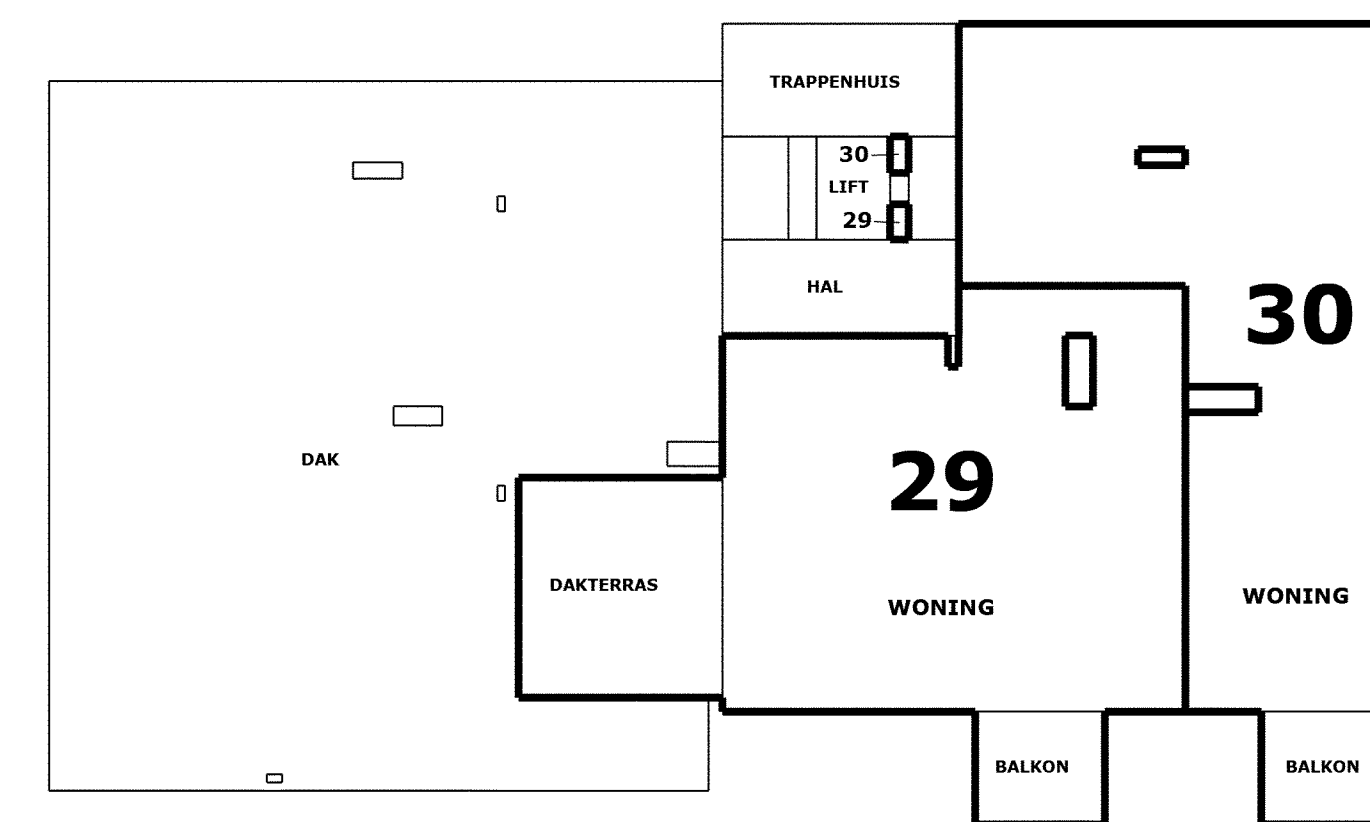
10e verdieping



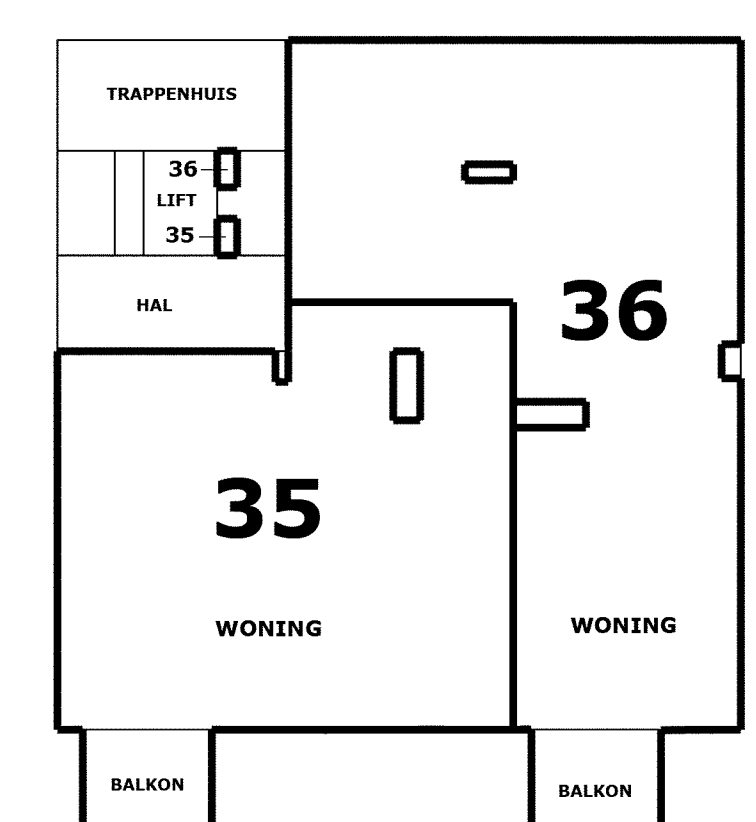
begane grond



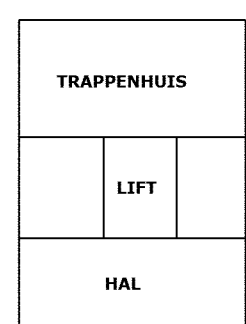
3e verdieping



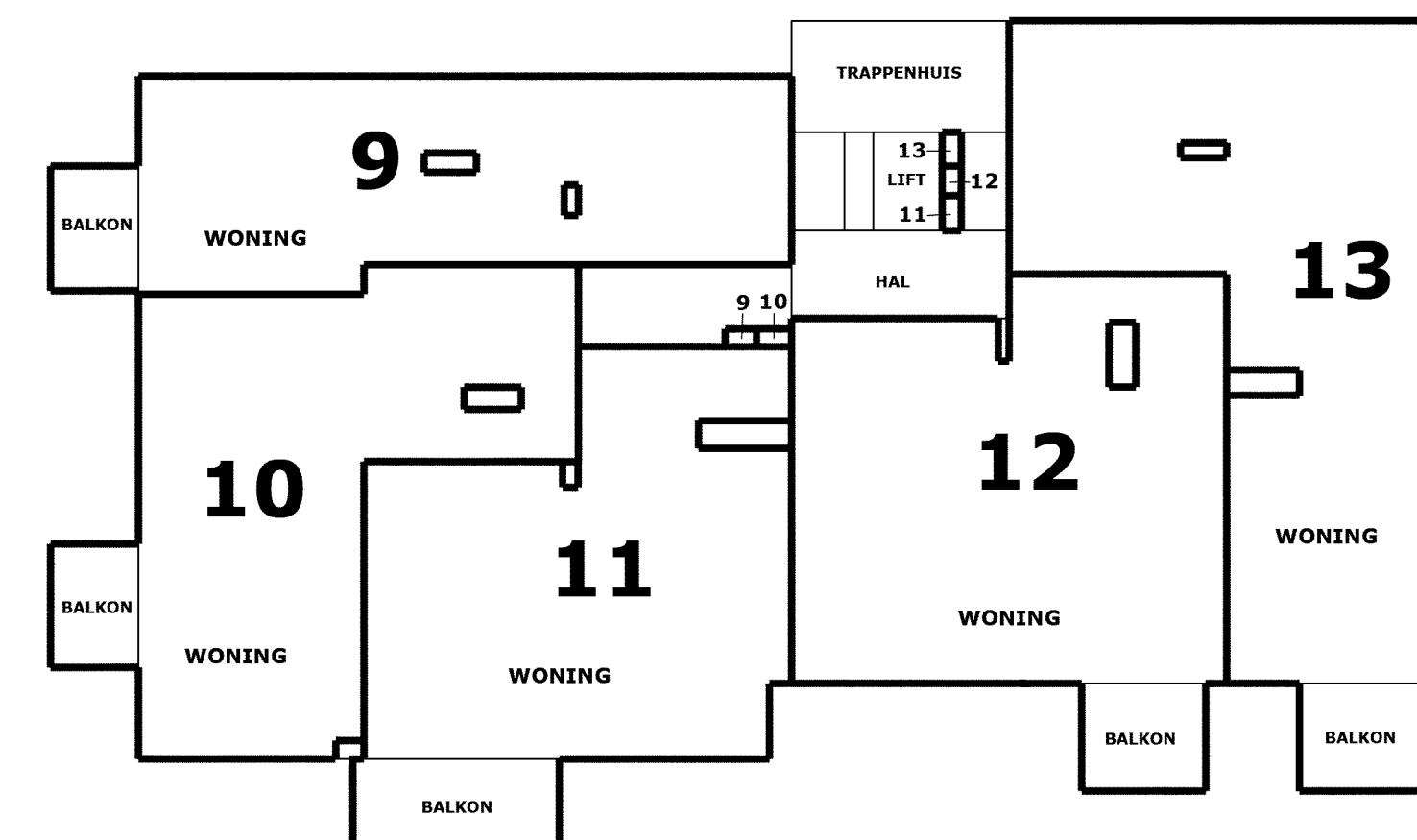
6e verdieping



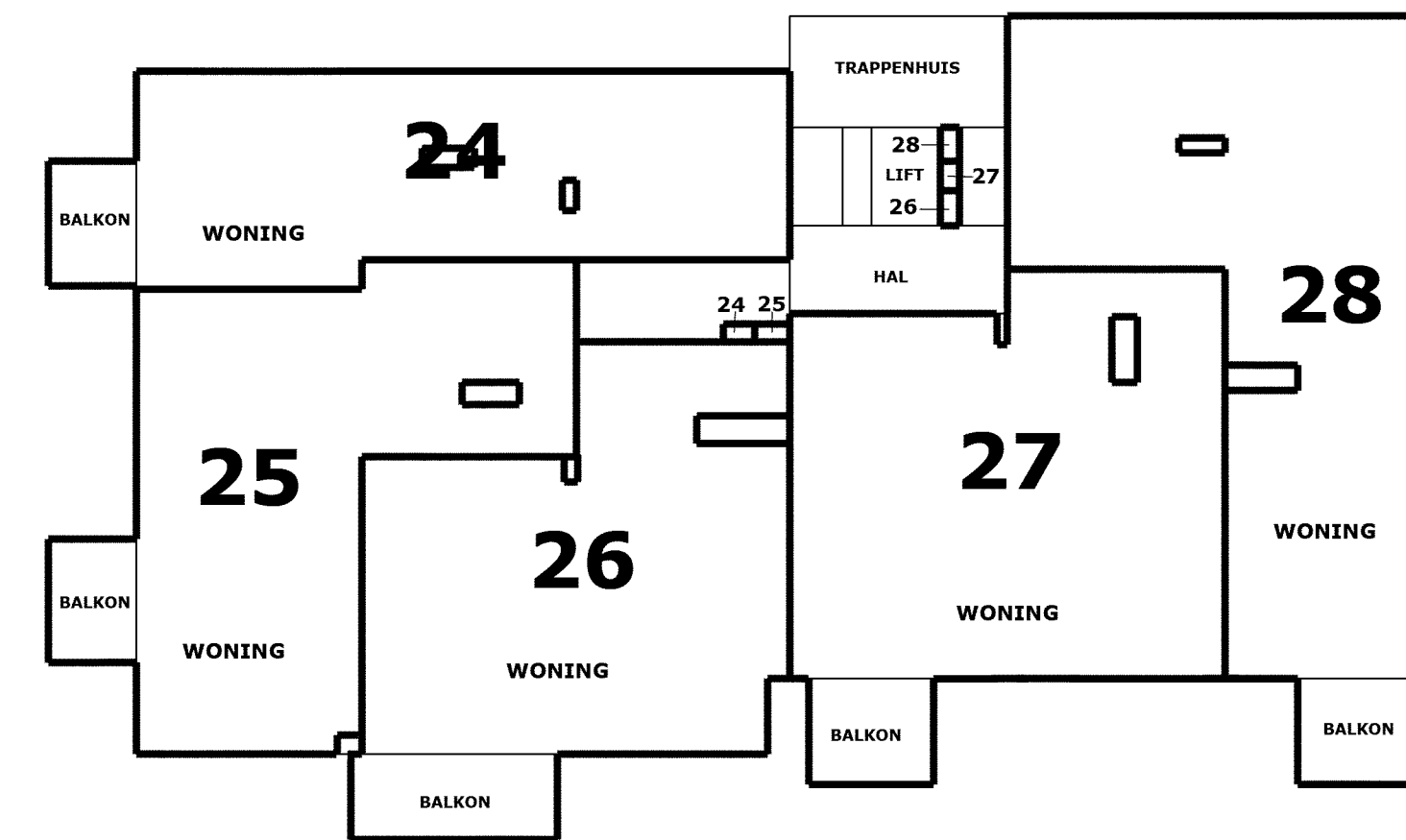
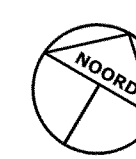
9e verdieping



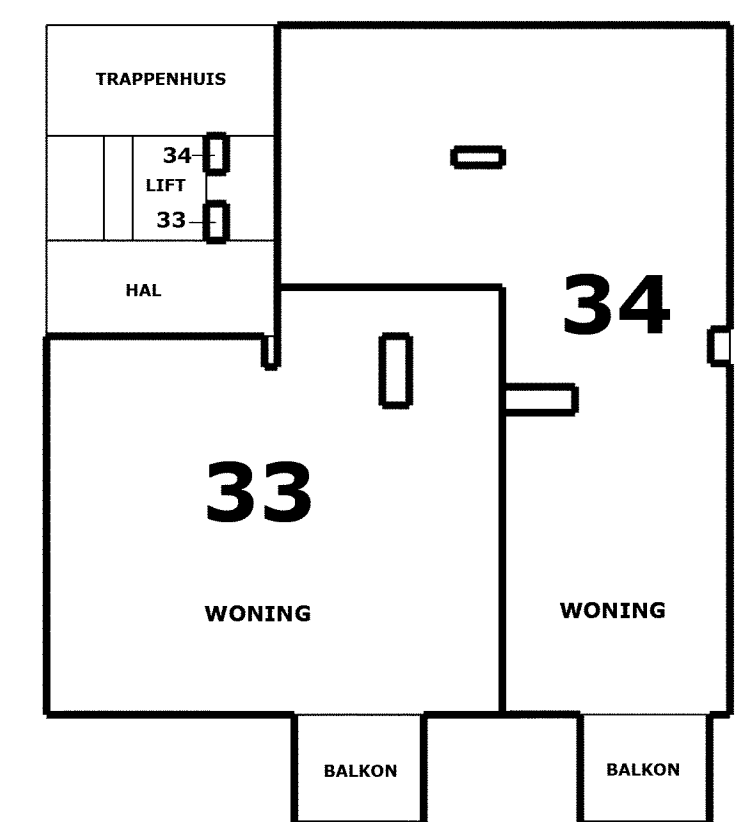
kelder



2e verdieping



5e verdieping



8e verdieping